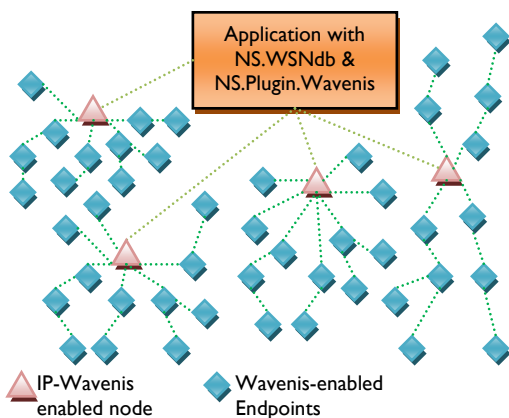


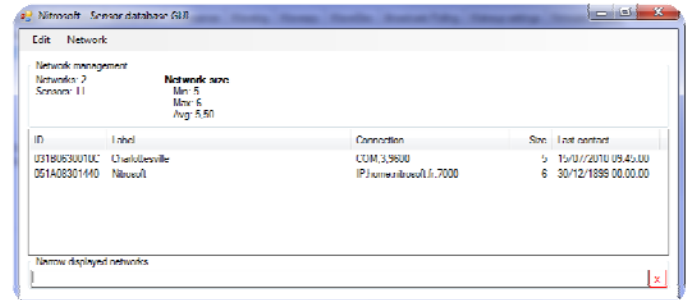
# NS.WSNdb

**NS.WSNdb is a software component library (DLL) that provides organizational services to your wireless sensor network (WSN) database. NS.WSNdb is able to manage as well simple as complex M2M network architectures with large coverage multi-network topology. In case of network evolution during installation, setup, commissioning, maintenance, and operation, this DLL automatically updates the network database to reflect related changes.**



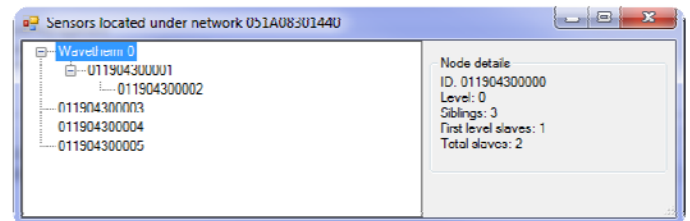
## Features at a glance

- Automatic network database update: add, replace and remove devices
- Supports mesh network services, service discovery protocols (SDP)
- Binary storage on hard disk drive ensuring data integrity, small memory size (Solid State Disk or Flash memory) with fast seek time of 0,1ms
- Transparent communications with registered devices
- Flexible network capability: Simple to multi-network architecture with star, tree, mesh topology
- Each network features its own root device
- Track'n Trace: in case sensor/actuator moves from a network to another one, this DLL tracks, identifies and stores changes



## Software environment

A simple Graphic User Interface (GUI) allows you to manually add, edit or remove networks and devices within each network.



## Prerequisites & Companion tools

You can either provide your initial network database or alternatively, use NS.WSNdb.Viewer3D companion DLL to capture your network and extract/create your network database. When using NS.WSNdb.Viewer3D or Google Earth™, network database of nodes can also feature GPS coordinates, providing useful location information for more efficient network management.

Specifications	
<b>Footprint</b>	30 KB - DLL
<b>.NET</b>	Framework 2.0 Compact Framework 2.0
<b>Database requirements</b>	552 bytes / site 128 bytes / sensor 1 site of 2000 nodes = 256 KB