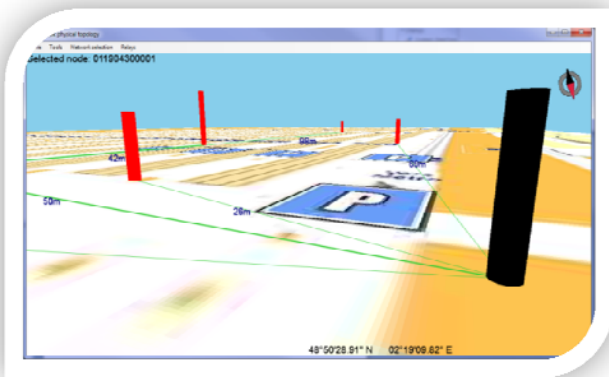
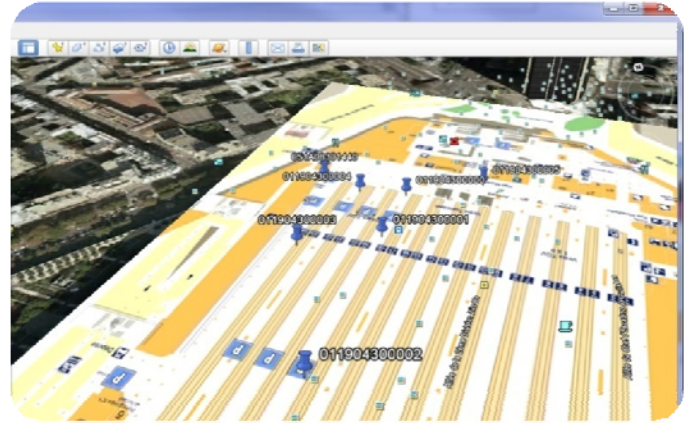


NS.WSNdb.Viewer3D

NS.WSNdb.Viewer3D is a software component (DLL) that provides 3D services for remote monitoring of wireless sensor networks. Leveraging an external network data base, this DLL allows the creation of 3D renderings of sites. Including fully compatible Google Earth™ features, the DLL navigates throughout the network using walk-through or bird's eye views. This DLL offers direct interaction with every node in the network by using contextual user interfaces while drag & drop operations deliver accurate location coordinates.



Features at a glance

- Network viewer of the wireless sensor network
- Highlights communication bottlenecks
- Calculates distance between nodes
- Indicates maximum radio range coverage (wireless technology dependant)
- Google Earth™ import and export features
- 3D-display of geographical site
- Single/multiple site/networks
- Designed with DirectX for top performances

Companion Tools

NS.WSNdb.Viewer3D is an add-on library to dedicated wireless technology plug-ins delivered by Nitrosoft:

- NS.Plugin.Wavenis
- NS.Plugin.NFC

NS.WSNdb.Viewer3D requires an external network data base. See NS.WSNdb for implementation

Specifications	
Footprint	847 KB - DLL
.NET Framework	2.0
Prerequisites	- NS.Plugin.Wavenis - A sensor database
DirectX version	DirectX 11