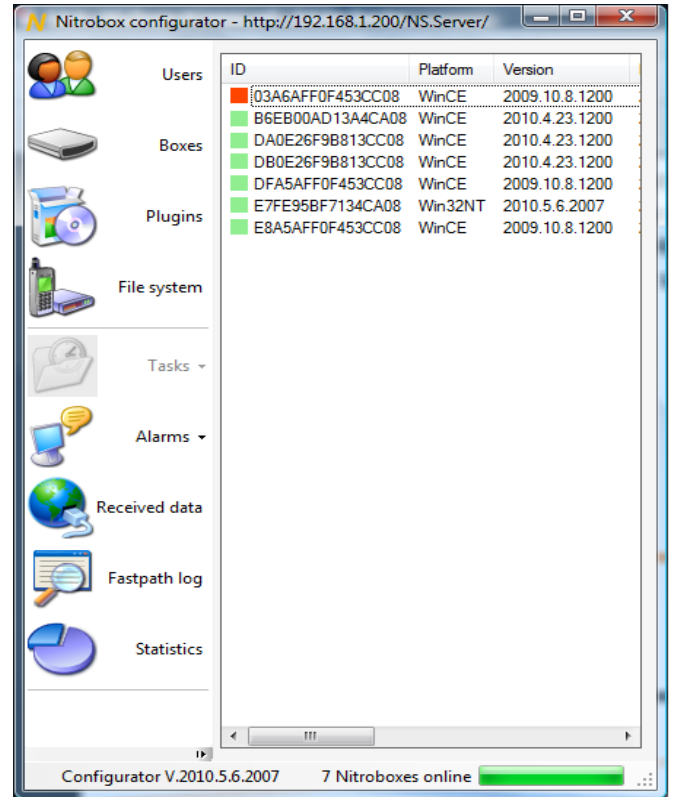
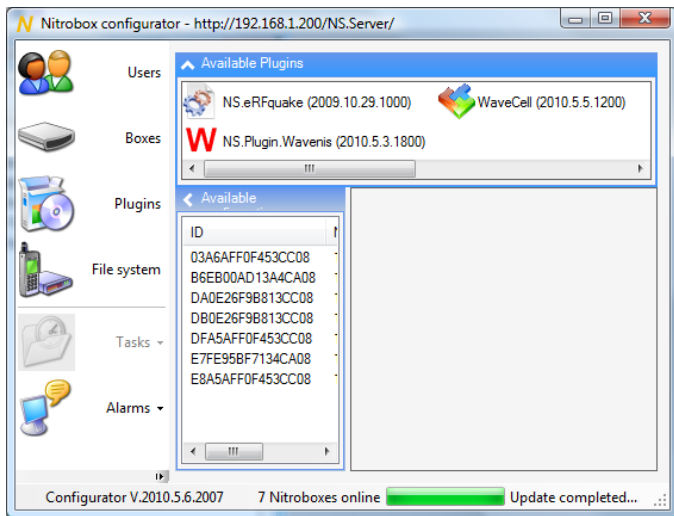


NS.Admin

NS.Admin is a software application (.exe) that provides a helpful man machine interface (MMI) to monitor your M2M application. **NS.Admin** offers viewer services of your overall M2M network architecture. It provides a collection of browsers to configure and display user accounts, gateways parameters, and also alarms and events coming from the field via the gateways. From the user interface, **NS.Admin** is managing file transfers for uploading and downloading files from/to gateways, and also for downloading upgrade softwares to sensors/actuators of your application.



- Software revision management of plug-ins for WinPC, WinCE, shared between all gateways or private for one or few gateways
- Configuration of user's access rights and notifications (email, sms)
- Alarm viewer
- Alarm history browser
- Remote commands to gateways (Runtime reboot), to server (redirection), to wireless sensor (transparent communications)
- Backup and export features



Features at a glance

- MMI administration tool
- Graphic User Interface (GUI) with viewer and browser of your overall WAN and WSN network
- Displays plug-in for configuration, monitoring and diagnostic of your gateways

Specifications

Operating System	Windows PC
Footprint	980 KB – Exe
.NET	Framework 2.0